



# BioMOD™

***A comprehensive, modular solution for biological wastewater challenges***

Aquatech's BioMOD™ Line of modular biological wastewater treatment systems provides comprehensive, modular solutions to clients from a broad range of industries. Supported by the company's immense engineering and development experience, the BioMOD™ Line includes DAF, MBBR, MBR, EGSB and Anaerobic MBR systems with uniquely advantageous performance characteristics to help you meet your discharge or reuse goals.

[www.aquatech.com](http://www.aquatech.com)



### PACKAGING YEARS OF BIOLOGICAL TREATMENT EXPERIENCE FOR YOUR FACILITY

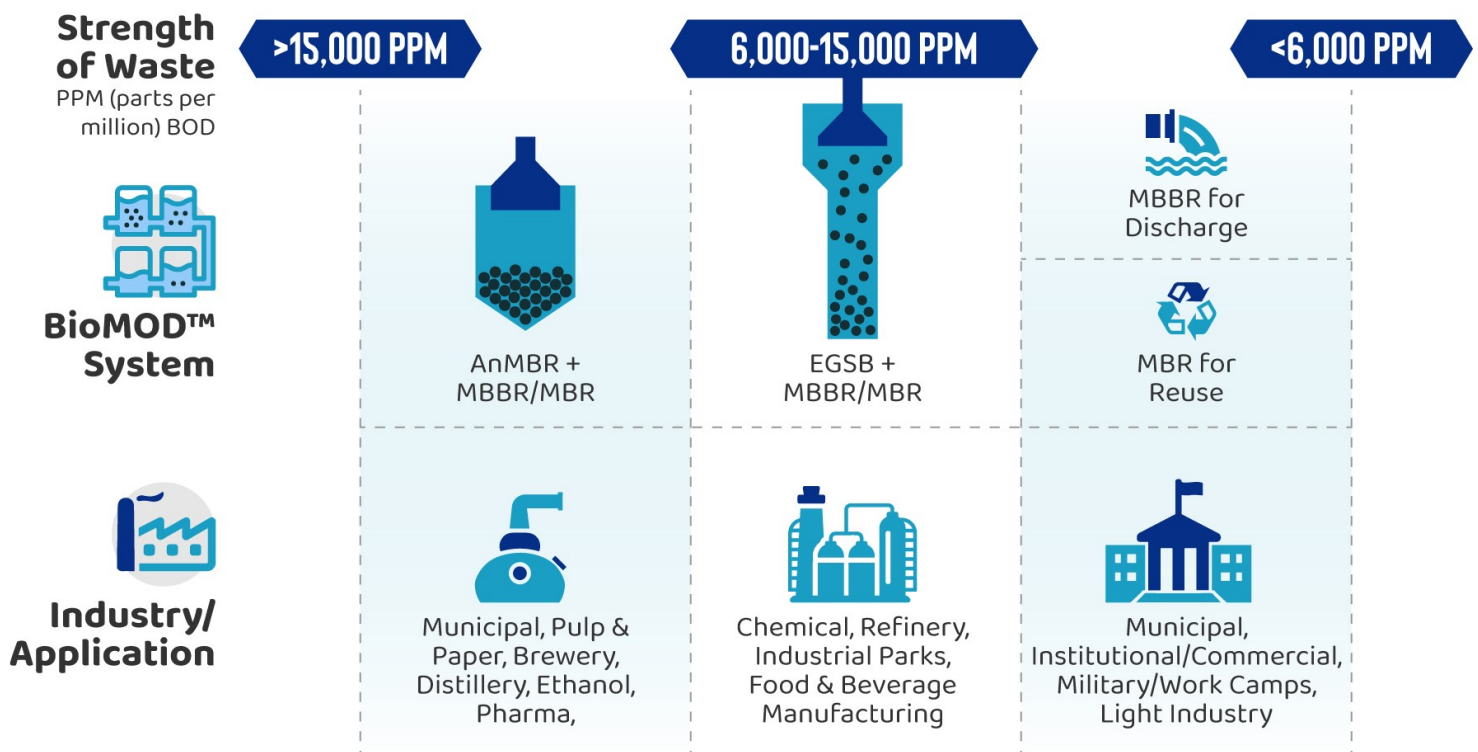
Aging infrastructure and increasing water use/disposal costs worldwide have created a demand for increasingly efficient, reliable and affordable treatment solutions. Systems meeting these demands should also be easy to install and accommodate a wide range of feed water conditions. Aquatech's BioMOD™ Line of modular systems deliver all of these benefits, along with added value of flexible design, industry-leading process technology and advanced automation to further reduce your facility's associated operating costs and labor.



BioMOD™ systems can be designed as an integrated, plug-and-play system based on your facility's

1. Feed water quality and
2. Desired end-use for treated water, i.e. for discharge or recycle.

Below, you can see Aquatech's Biological Sustainability Map, which takes these factors into account to give preliminary guidance on the most suitable BioMOD™ solution for you.

## Aquatech's Biological Sustainability Chart



BioMOD System					
Treatment Type*	Primary, Tertiary	Secondary	Secondary, Tertiary	Secondary, Tertiary	Secondary, Tertiary
Function	Removal of fats, oils, grease, suspended solids and soluble BOD	Removal of BOD, Nitrogen and fine particulates	Removal of BOD and fine particulates	Treats both suspended & soluble COD /BOD with methane biofuel as byproduct	Treats both suspended & soluble COD /BOD with methane biofuel as byproduct
Influent COD/BOD Range (ppm)	N/A	500 - 4,000	500 - 4,000	4,000 - 10,000	10,000 - 60,000+
Effluent Quality	Feed for other BioMODs (Primary treatment case) or discharge (Tertiary treatment case)	Discharge, irrigation or further recycling	UF-grade quality and suitable for discharge or reuse	Low suspended & soluble COD/BOD, suitable for discharge or further recycling	TSS-free and suitable for discharge or further recycling
Aquatech Value Added	Unmatched Engineering Capabilities & Experience	Ultra-high surface area Media enabling low energy, footprint	Consistently high permeate quality using QUA EnviQ Membranes	Proprietary Settler Technology	QUA CeraQ Membranes and High-Temp capability

\*1. Primary being settling of larger solids, 2. Secondary being filtration or digestion for further purification and 3. Tertiary being a polishing step to meet contaminant discharge/reuse requirements

### PACKAGE FEATURES

- **Single shippable 53' skid** to minimize footprint and simplify transport.
- Rental options available due to **plug-and -play capacity**
- Compartments **designed based on engineering team's vast field experience.**
- Simplified operation through **advanced automation** and optional features such as cloud-based monitoring, continuous supply of **chemicals** and **complete servicing.**
- Can operate in **series or parallel mode** for flexibility in effluent quality and flow rate, respectively.
- Can be **completely installed and operated** by Aquatech.



### THE AQUATECH ADVANTAGE

#### AQUATECH IS UNIQUELY POSITIONED TO SOLVE YOUR WASTEWATER RELATED ISSUES BASED ON THE FOLLOWING KEY VALUE ADVANTAGES:

- **Unparalleled Experience and Reach:** 1600 installations in 60 countries, including those for facilities requiring novel wastewater treatment solutions
- **Total Water Management approach:** Providing a complete, simple solution which minimizes life cycle costs and guarantees achievement of treatment goals.
- **Water-Technology-as-a-Service Model:** Remote monitoring, operational assistance and O&M service on 24/7/365 basis.
- **Advanced Engineering Capabilities:** Globally-renowned for expertise in design and implementation.
- **Competitive Financing Options:** Leasing, pay-per-gallon, DBOOM options & more are available based on your preference.

